

MSANK Wet Weather Management Program

January 2011 Newsletter

Administrative Order for Compliance (AOC) Update

MSANK submitted the Long Term Control Plan Phase I: Sewer System Investigation and Mapping report to the EPA on December 9, 2010. The report included:

- An overview of the Sewer System Investigation including results of the physical survey by MSANK and the visual inspection by MSANK, the City of Lower Burrell, the City of Arnold and Plum Borough. Results of the sewer line cleaning and CCTV program and the Sewer System Dye or Equivalent Testing program were also presented.
- An outline of the Sewer System Deficiency Corrections requirements
- A description of the technical requirements of the Sewer System Mapping including GIS attribute data and metadata
- A description of the AOC Implementation Upcoming Program and Activities

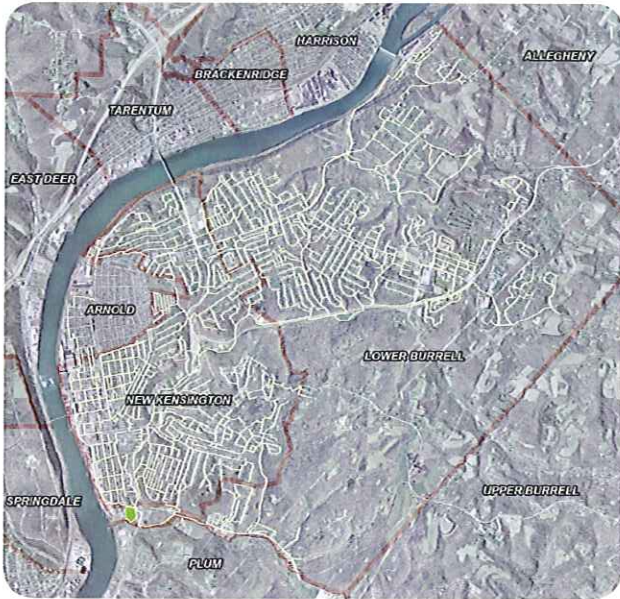


Upcoming Activities

MSANK and the municipalities are currently in the process of preparing a Flow Monitoring Plan to define the methodologies and conditions of a year long flow and pollutant monitoring program.

MSANK is currently having bid documents prepared to conduct the next phase of the program to address the sewer system deficiencies. Bid documents for the sewer repair and lining contract are expected to be available the first week in February. The project will include ten sewer sections identified as the areas most in need of repair. The project will also include repair and lining of manholes which were also identified as being the most in need of repair.

Questions? Comments? Please contact:
Daniel Rowe, Jr., Manager, MSANK
T (724) 335-9813 www.MSANK.org



Current Status of Activities

MSANK

MSANK has completed approximately 100,000 linear feet of CCTV with approximately 2,000 lineal feet remaining to be televised. Logistics are currently being reviewed for areas that will require sewer bypassing in order to complete televising the collection system.

Arnold

Arnold has completed the CCTV and cleaning as required by the AOC. In addition, they now have an electronic database and asset management system known as ICOM to help support decision making well into the future. The City is in the process of analyzing the television data and the potential impacts that any repairs would have on the City's budget.

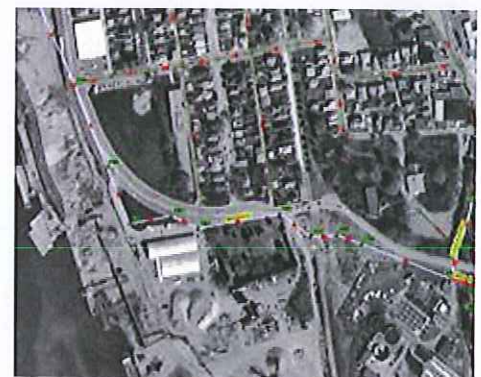
Lower Burrell

The City of Lower Burrell Public Works personnel will be meeting with their GIS consultant to enter additional information regarding their sanitary sewage facilities. This upgrade will include, but not be limited to, converting the existing paper copy manhole inspection reports into an electronic format. The intent of the Public Works Department is to have horizontal and vertical control for the City of Lower Burrell's entire sanitary sewer system which will exceed the requirements of the AOC. This addition to the GIS system will be a valuable asset for the Long Term Control Plan and future maintenance of the sanitary sewer system. Alpha Engineering is in the process of determining the exact number and location of flow monitors to be installed within the City of Lower Burrell. This is a critical step and must be fully evaluated to provide adequate flow

A Geographic Information System (GIS)

integrates hardware, software, and data for capturing, managing, analyzing, and displaying all forms of geographically referenced information.

GIS allows us to view, understand, question, interpret, and visualize data in many ways that reveal relationships, patterns, and trends in the form of maps, globes, reports, and charts.



monitoring coverage for an accurate Hydrologic and Hydraulic model yet be fiscally responsible in regard to the expense of flow monitoring.

Community News

The Plum Borough Municipal Authority's project to replace a portion of the Logans Ferry sanitary sewer system is nearing completion. The main line construction activities were completed in early January and the contractor is currently replacing private laterals. The project is expected to be complete in February 2011.

Plum

Plum has also completed its sanitary sewer television inspection to the extent that it can gain access to the sewer system. All existing manholes have been inspected.